

7-104 Quarter-Turn with L-Handle Pr20.1 L18

Hand operable, IP65, Stainless Steel, Padlockable with bracket

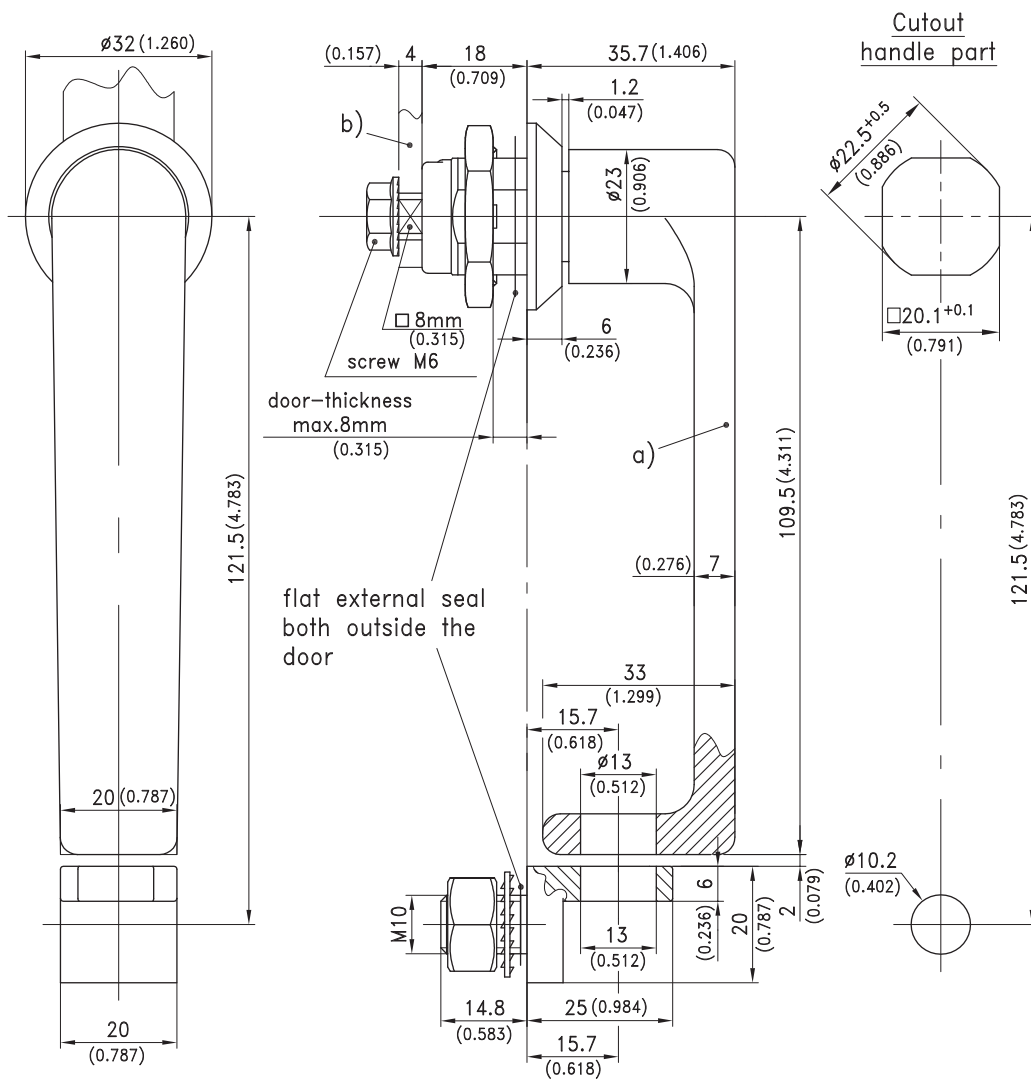
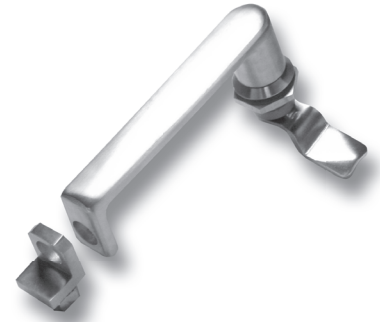


Product Notes:

- RH and LH application
- Quarter-Turn consists of two components which are combined to fit application
- Water and dust tight according to IP65, DIN EN 60529 with two O-Rings
- Zinc die - see Product System 1-153

Material:

- **Handle, hook and housing:** Stainless Steel AISI 316
- **Cam:** Stainless Steel or steel, zinc plated



	Part No.	See Page
a) Quarter-turn with L-handle	200-9425	
b) Cams		01.24, 01.101, 01.102, 03.42
Standard version		01.62